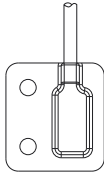


LOWRANCE®

HOOK² INLINE TEMP SENSOR INSTALLATION GUIDE



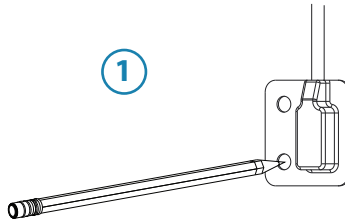
For product manuals, technical specifications, certificates and declarations refer to the product website:

www.lowrance.com

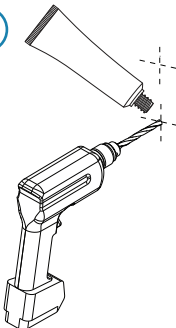


Mounting

1

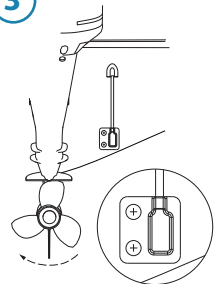


2

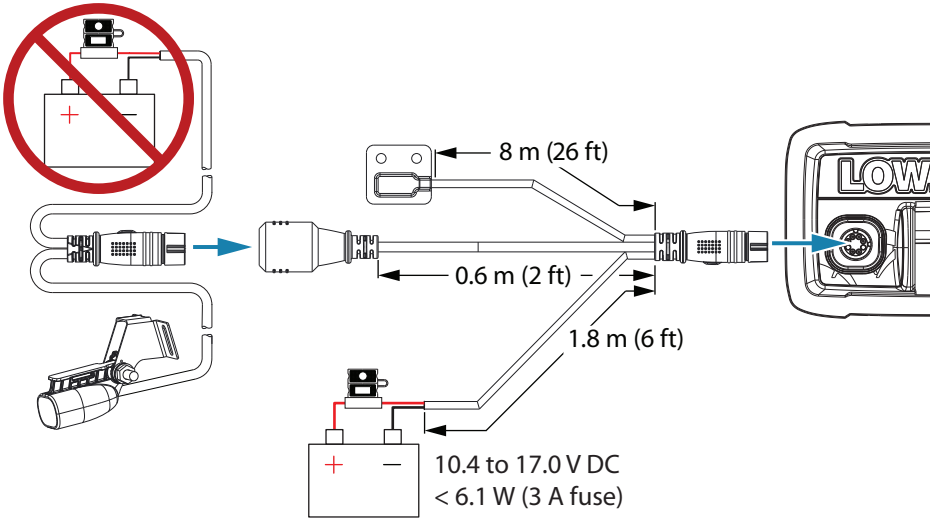


Apply a marine high-grade above- or below- waterline sealant/adhesive compound to the pilot holes.

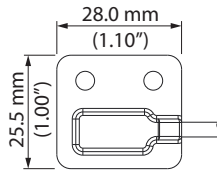
3



Bullet skimmer



Dimensions



Splitshot/ tripleshot

